

PROJECT EPOQUE

STANDALONE 9.9 MW ERCOT BESS

Teaser September 2025

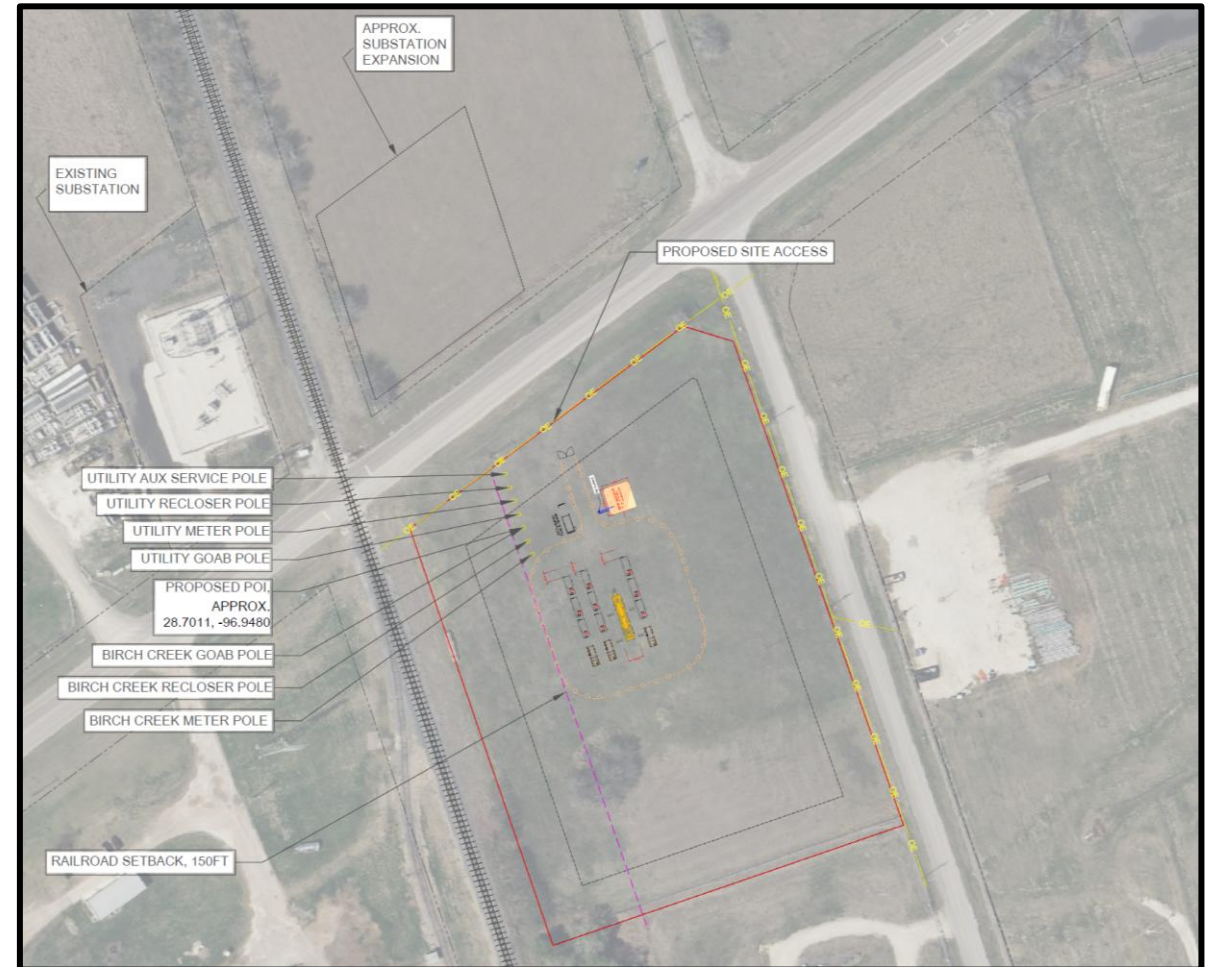


Project Overview

Birch Creek has developed a standalone 9.9MW / 2-hour BESS project in Victoria, Texas. The project has an executed SGIA and **has already paid for the** interconnection upgrade.

Project Name	Weaver BESS, LLC
POI Available Capacity (MWac)	9.90
BESS Capacity (MW)	9.90
BESS Usable Energy at POI (MWh) / Duration (hr)	9.90 / 2 hour
Operation	ERCOT Wholesale Market Participation: Nodal Arbitrage, Ancillary Services
Coordinates	28°42'04.0"N 96°56'52.8"W
County	Victoria County
Load Zone	ERCOT South
Equipment	Li-Ion BESS
ITC Bonus	+10%; Energy Community (40% Total)
IX Status	SGIA Executed
Interconnection / POI Voltage	AEP Shepley 12.47 / 138kV Substation \$513,034.50 IX cost ALREADY paid
Target FNTF / Target COD	Q1 2026 / Q3 2027
Environmental & Permitting	No Zoning Required Crossing is responsibility of AEP per executed IA ENV 3 pack, Phase 1, ALTA complete
Project Land Acquisition	4.7 acres under long term lease agreement

Project Location





Sean Bruno
Principal
Phone: 908.403.2352
sean@fractalba.com



Judy McElroy
CEO
Phone: 512.815.8240
judy@fractalba.com

PROCESS DISCLAIMERS

THIS PRESENTATION, THE INFORMATION SET FORTH HEREIN, AND ANY OTHER INFORMATION RELATED HERETO ARE PRELIMINARY ONLY.

NONE OF BIRCH CREEK OR ANY OF ITS AFFILIATES MAKES, NOR SHALL BE DEEMED TO HAVE MADE, ANY REPRESENTATION OR WARRANTY, EXPRESS, IMPLIED, STATUTORY OR OTHERWISE, WITH RESPECT TO THE ACCURACY OR COMPLETENESS OF ANY SUCH INFORMATION, NOR SHALL BIRCH CREEK OR ANY OF ITS AFFILIATES HAVE ANY LIABILITY TO THE RECIPIENT OF SUCH INFORMATION OR ANY OTHER PERSON OR ENTITY RESULTING FROM THE USE OF SUCH INFORMATION.

All contact should be made exclusively through Fractal. Under no circumstances should the management, personnel, and/or contractors of Birch Creek or any of its respective affiliates or partners be contacted directly regarding the Transaction or the information contained herein. Violation of this protocol may result in disqualification from the process in addition to any other rights that Birch Creek may have under any applicable Confidentiality Agreement or otherwise.