

PROJECT REDZONE

ERCOT BESS PORTFOLIO

Teaser May 2025



AMERICAN WIND AND SOLAR – PROJECT PORTFOLIO

Portfolio Overview

- American Wind and Solar has developed a standalone, 200 MW, 2-hour energy storage project and a 274.1 MWdc/239.4 Mwac PV+ 200MW, 2-hour BESS hybrid plant in Kinney and Midland Counties, respectively.

Site Name	Longday Solar + BESS	Energy City BESS
Solar Size (MWdc/MWac)	274.1/239.4	-
Capacity (MWh)	400	400
Power (MW)	200	200
Operation	Merchant Solar Generation, Nodal Arbitrage; Ancillary Services	Nodal Arbitrage; Ancillary Services
Lat, Long	29.244653, -100.420846	32.068504,-102.143061
County	Kinney	Midland
Load Zone	ERCOT South	ERCOT West
Equipment	Li-Ion BESS	Li-Ion BESS
Interconnection Studies	Steady State, Short Circuit, Facility Complete Stability Study in Progress Draft SGIA	Studies Complete Awaiting Draft SGIA
Target Phase I ESA	Complete	Complete
Target COD	Q4 2027	Q4 2027
Interconnection	AEP 138kV	ONCOR 138kV
Environmental Studies	Complete	Complete
Permitting	Complete	Complete
Project Land Acquisition	Lease Agreement Signed	Lease Agreement Signed

Project Locations

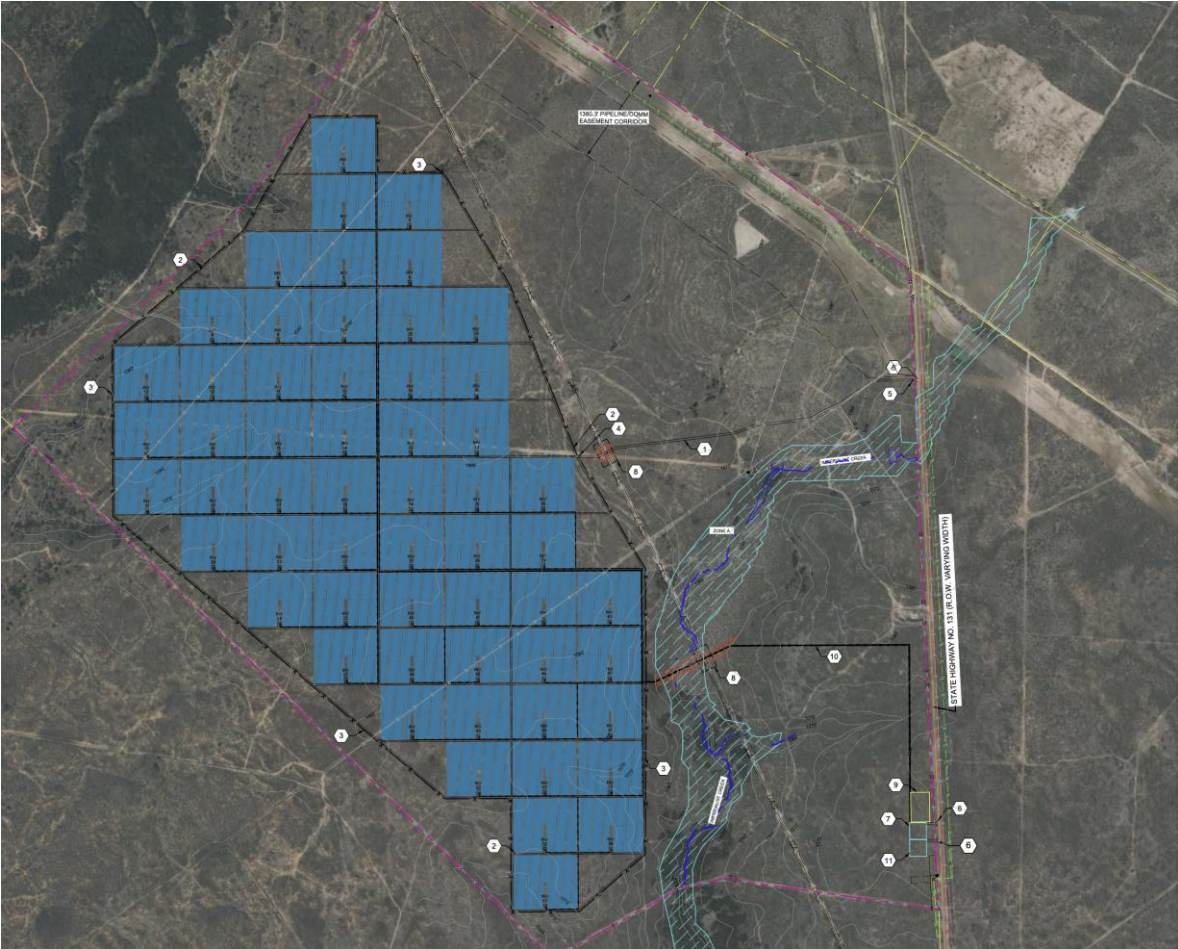


Project Location

Project Overview

- American Wind and Solar has developed a PV+BESS project in Kinney County, Texas

Project Name	Longday Solar & BESS
POI Available Capacity (MWac)	204.77
Solar Size (MWdc/MWac)	274.1/239.4
BESS Capacity (MW)	200.0
BESS Usable Energy at POI (MWh) / Duration (hr)	400.0 / 2 hour
Operation	Merchant Solar Generation ERCOT Wholesale Market Participation: Nodal Arbitrage, Ancillary Services
Coordinates	29.244653, -100.420846
County	Kinney County
Load Zone	ERCOT South
Equipment	Li-Ion BESS
Interconnection / POI Voltage	AEP 25INR0502/25INR0501 138 kV at AEP Bracketville to Escondido 138kV Line
Target FNTF / Target COD	Q3 2025 / Q4 2027
Environmental & Permitting	Project is permissible by-right in Kinney County No County requirements or ordinances
Project Land Acquisition	Lease Length: 30+5+5 years from COD ~1200 acres

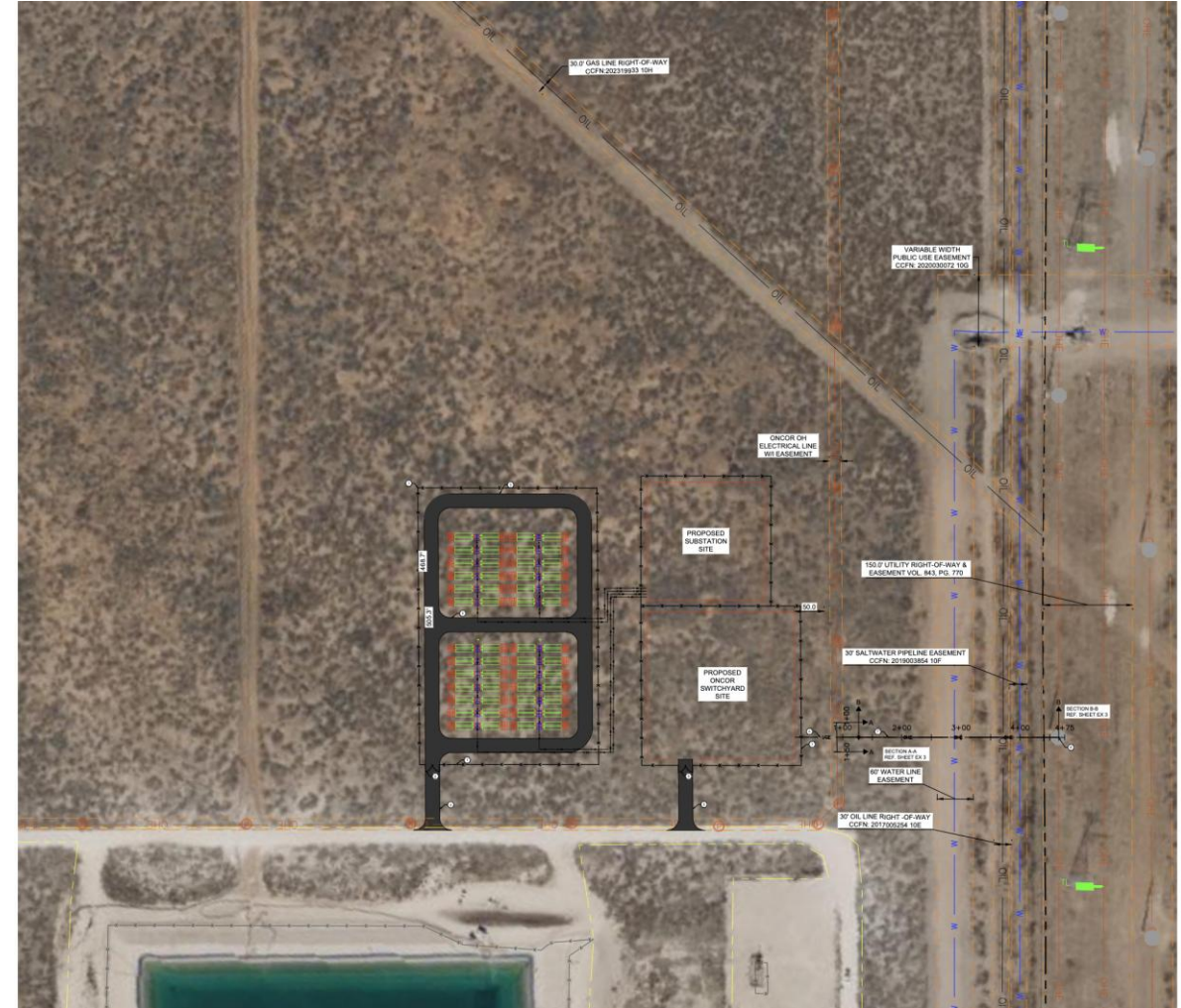


Project Overview

- American Wind and Solar has developed a Standalone BESS project in Midland, TX

Project Name	Energy City BESS
POI Available Capacity (MWac)	204.90
BESS Capacity (MW)	200.0
BESS Usable Energy at POI (MWh) / Duration (hr)	400.0 / 2 hour
Operation	Merchant Solar Generation ERCOT Wholesale Market Participation: Nodal Arbitrage, Ancillary Services
Coordinates	32.068504,-102.143061
County	Midland County
Load Zone	ERCOT West
Equipment	Li-Ion BESS
Interconnection / POI Voltage	ONCOR 26INR0231 138 kV at Texaco MABEE Tap (#1179) – MARIENSFIELD (#1200)
Target FNTF / Target COD	Q1 2027 / Q4 2027
Environmental & Permitting	Project is permissible by-right in Midland County and City. No County requirements or ordinances.
Project Land Acquisition	Lease Length: 15+5+5 years from COD ~18.7 acres

Project Location



PROCESS CONTACTS



Cyrus Etemadi
Managing Director
Phone: 512.363.2142
cyrus@fractaladvisory.com



Aaron Barker
Director of Due Diligence
Phone: 541.224.2797
aaron@fractalba.com

PROCESS DISCLAIMERS

THIS PRESENTATION, THE INFORMATION SET FORTH HEREIN AND ANY OTHER INFORMATION RELATED HERETO IS PRELIMINARY ONLY.

NONE OF AMERICAN WIND AND SOLAR OR ANY OF ITS AFFILIATES MAKES, NOR SHALL BE DEEMED TO HAVE MADE, ANY REPRESENTATION OR WARRANTY, EXPRESS, IMPLIED, STATUTORY OR OTHERWISE, WITH RESPECT TO THE ACCURACY OR COMPLETENESS OF ANY SUCH INFORMATION, NOR SHALL AMERICAN WIND AND SOLAR OR ANY OF ITS AFFILIATES HAVE ANY LIABILITY TO THE RECIPIENT OF SUCH INFORMATION OR ANY OTHER PERSON OR ENTITY RESULTING FROM THE USE OF SUCH INFORMATION.

All contact should be made exclusively through Fractal Advisory. Under no circumstances should the management, personnel and/or contractors of American Wind and Solar or any of its respective affiliates or partners be contacted directly regarding the Transaction or the information contained herein. Violation of this protocol may result in disqualification from the process in addition to any other rights that American Wind and Solar may have under any applicable Confidentiality Agreement or otherwise.